

APPENDIX A: SUPPORTING FIGURES

LIST OF FIGURES

Figure 1. Predicted FWP TN Concentrations at the end of 20 Days (Year 0 and 50 Conditions).....	1
Figure 2. Predicted FWP TP Concentrations at the end of 20 Days (Year 0 and 50 Conditions).....	2
Figure 3. Predicted FWP Salinity Concentrations at the end of 20 Days (Year 0 and 50 Conditions).....	3
Figure 4. Conceptual Model of Algal Blooms as they occur in Seawater	4
Figure 5. Percent of River Water in Lake Maurepas at 20 Days	5
Figure 6. Past, Present and Future Projects in the Deltaic Plain.....	6
Figure 7. Proposed Pine Island Mitigation Site (Swamp restoration)	7
Figure 8. Proposed St. James Mitigation Site (Swamp restoration)	8
Figure 9. Proposed Boat Launch Relocation	9
Figure 10. Habitats found in the planning area	10
Figure 11. Scenic rivers found in the planning area.....	11

Figure 1. Predicted FWP TN Concentrations at the end of 20 Days (Year 0 and 50 Conditions)

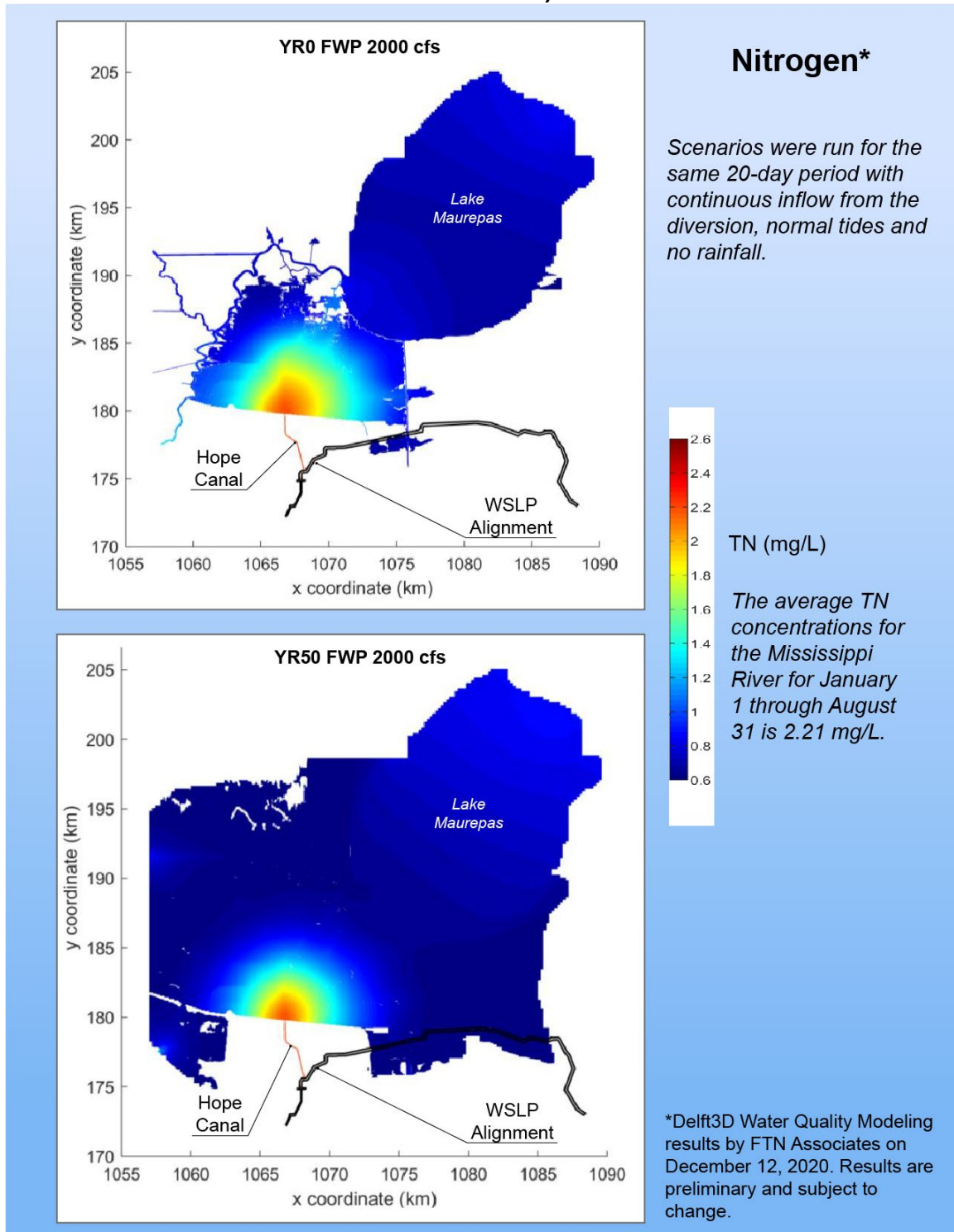


Figure 2. Predicted FWP TP Concentrations at the end of 20 Days (Year 0 and 50 Conditions)

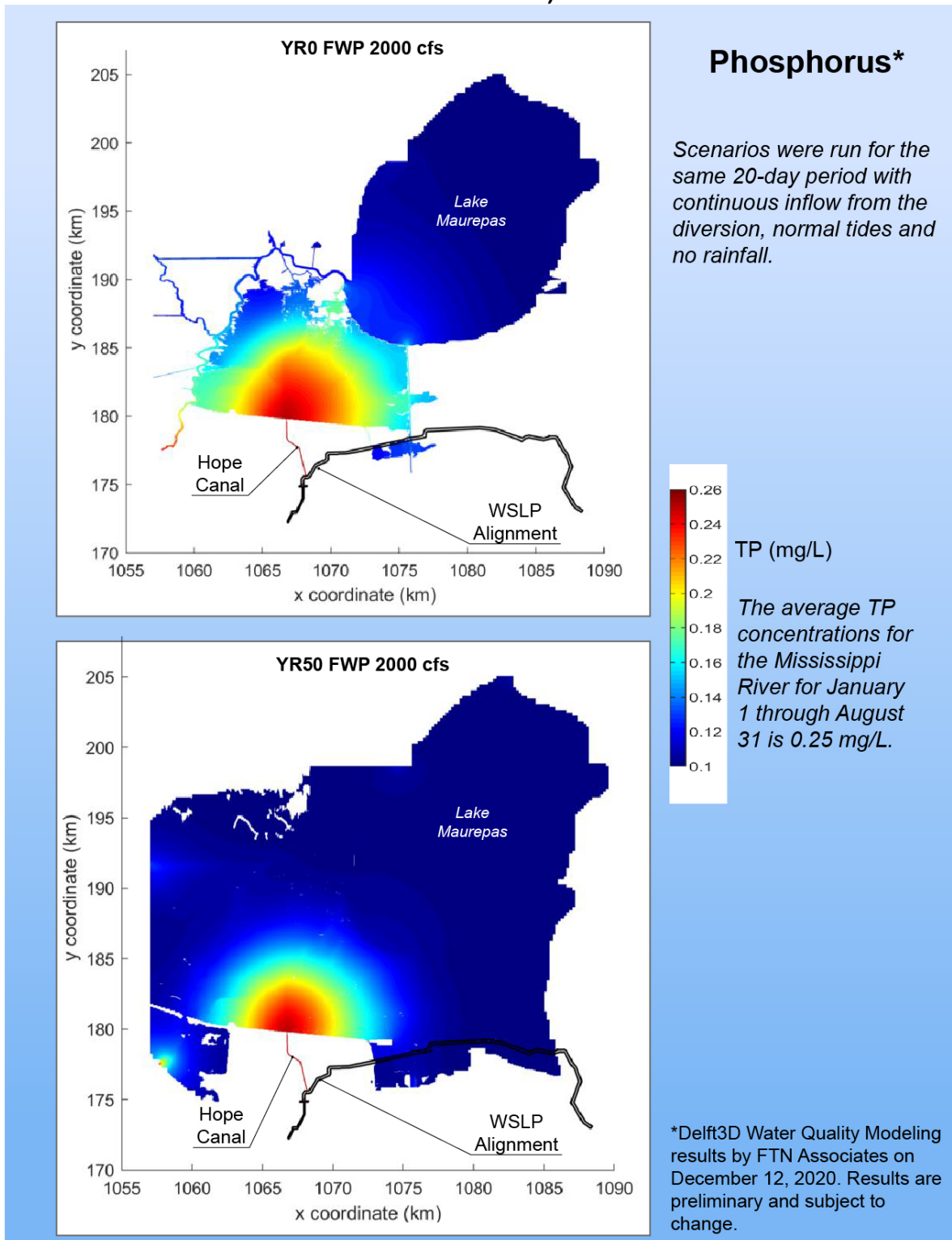


Figure 3. Predicted FWP Salinity Concentrations at the end of 20 Days (Year 0 and 50 Conditions)

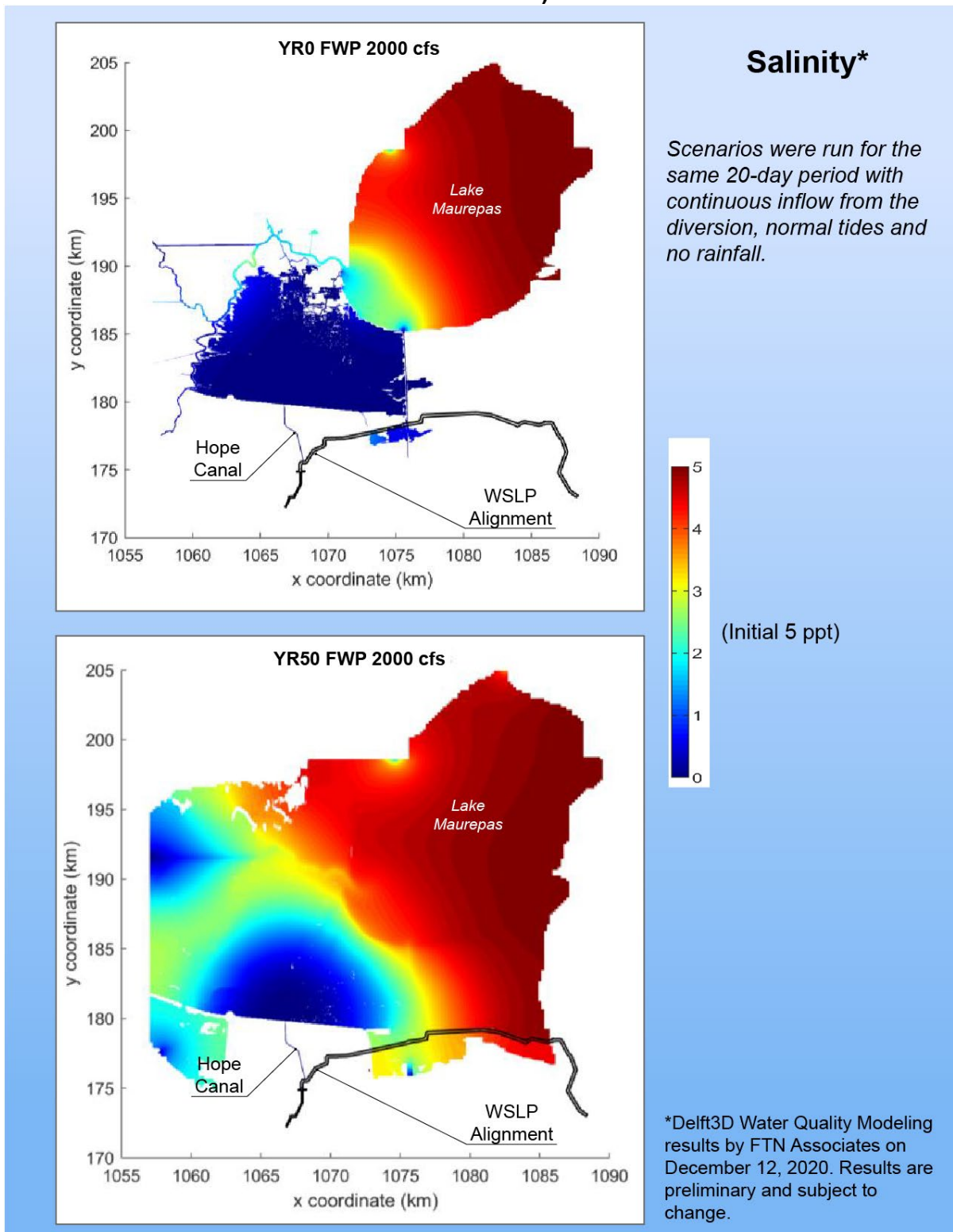


Figure 4. Conceptual Model of Algal Blooms as they occur in Seawater

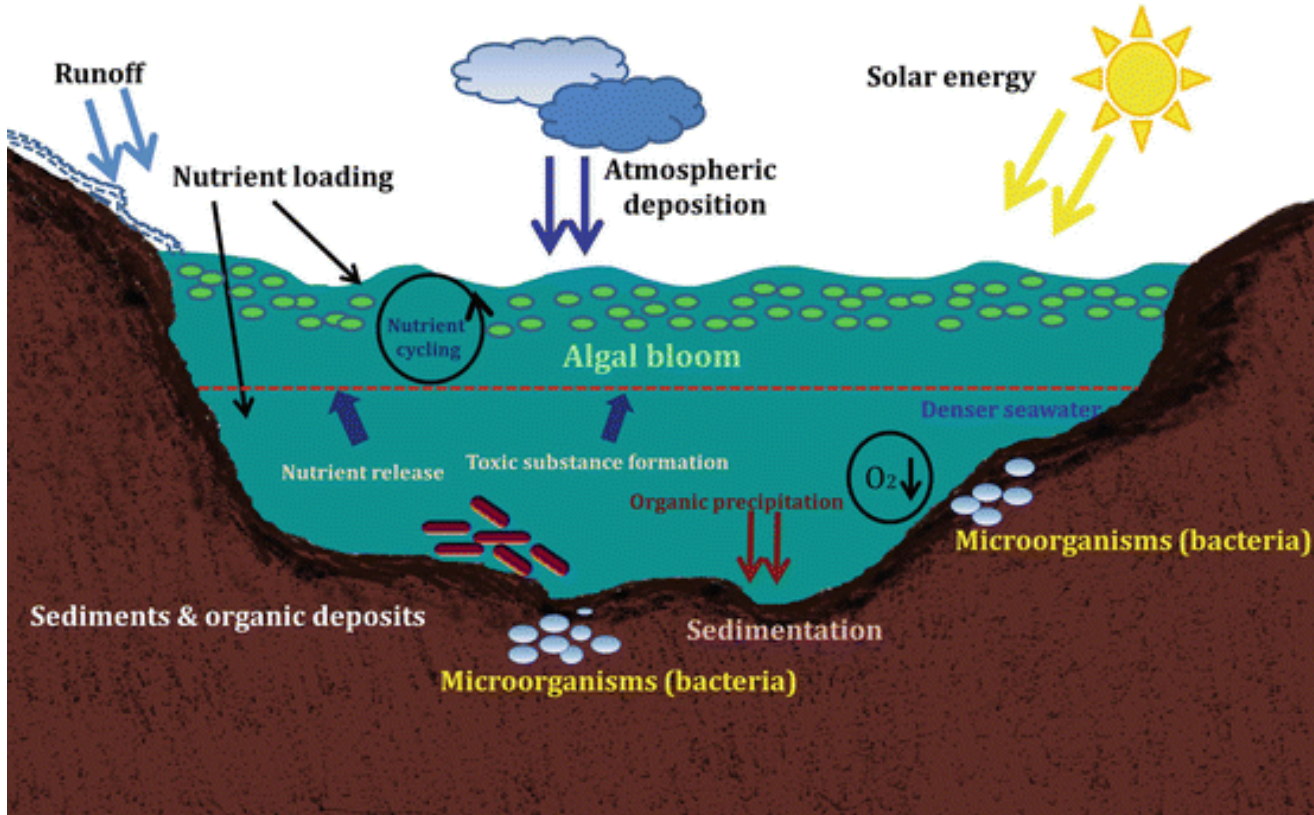


Figure 5. Percent of River Water in Lake Maurepas at 20 Days

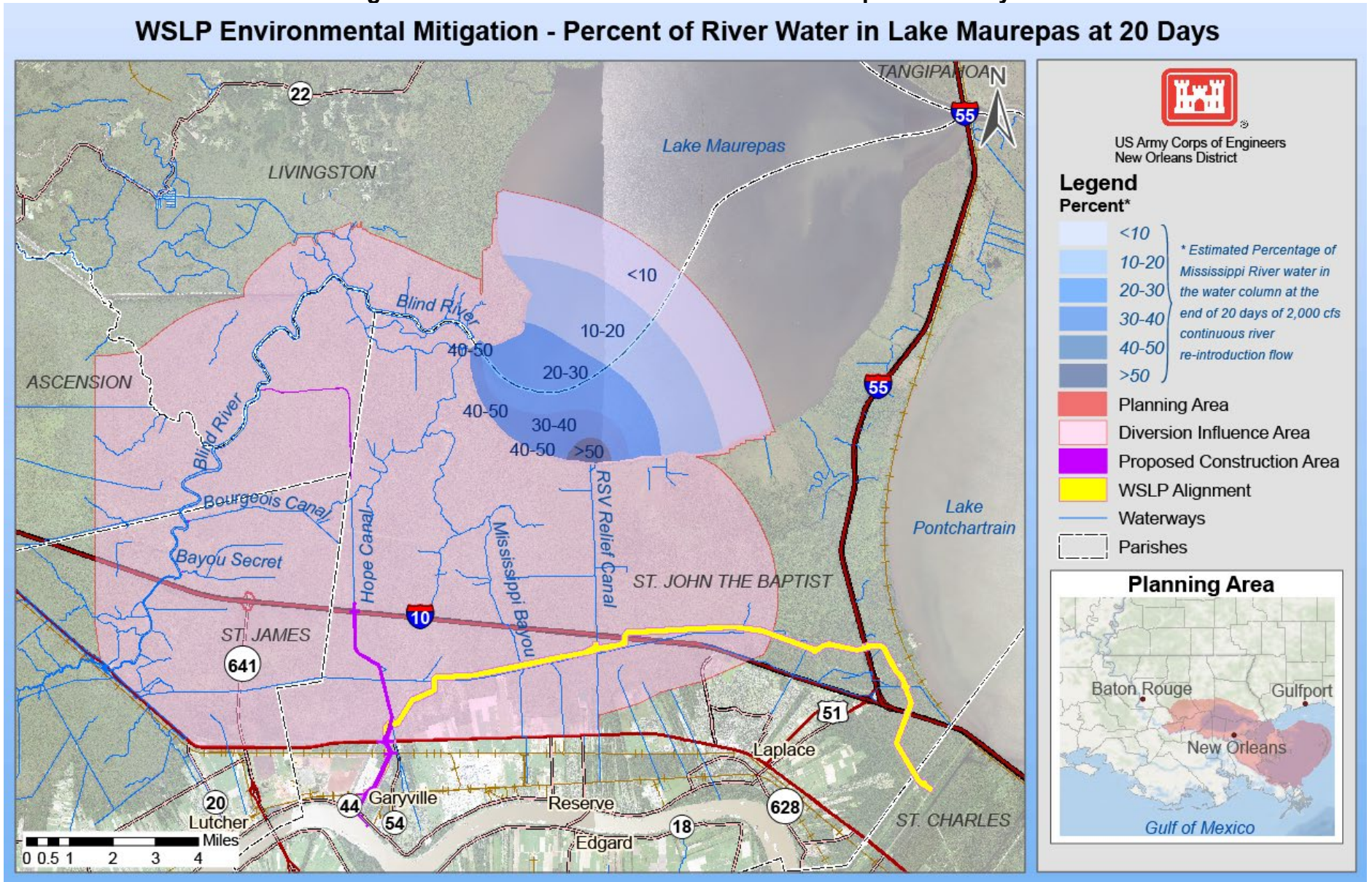


Figure 6. Past, Present and Future Projects in the Deltaic Plain

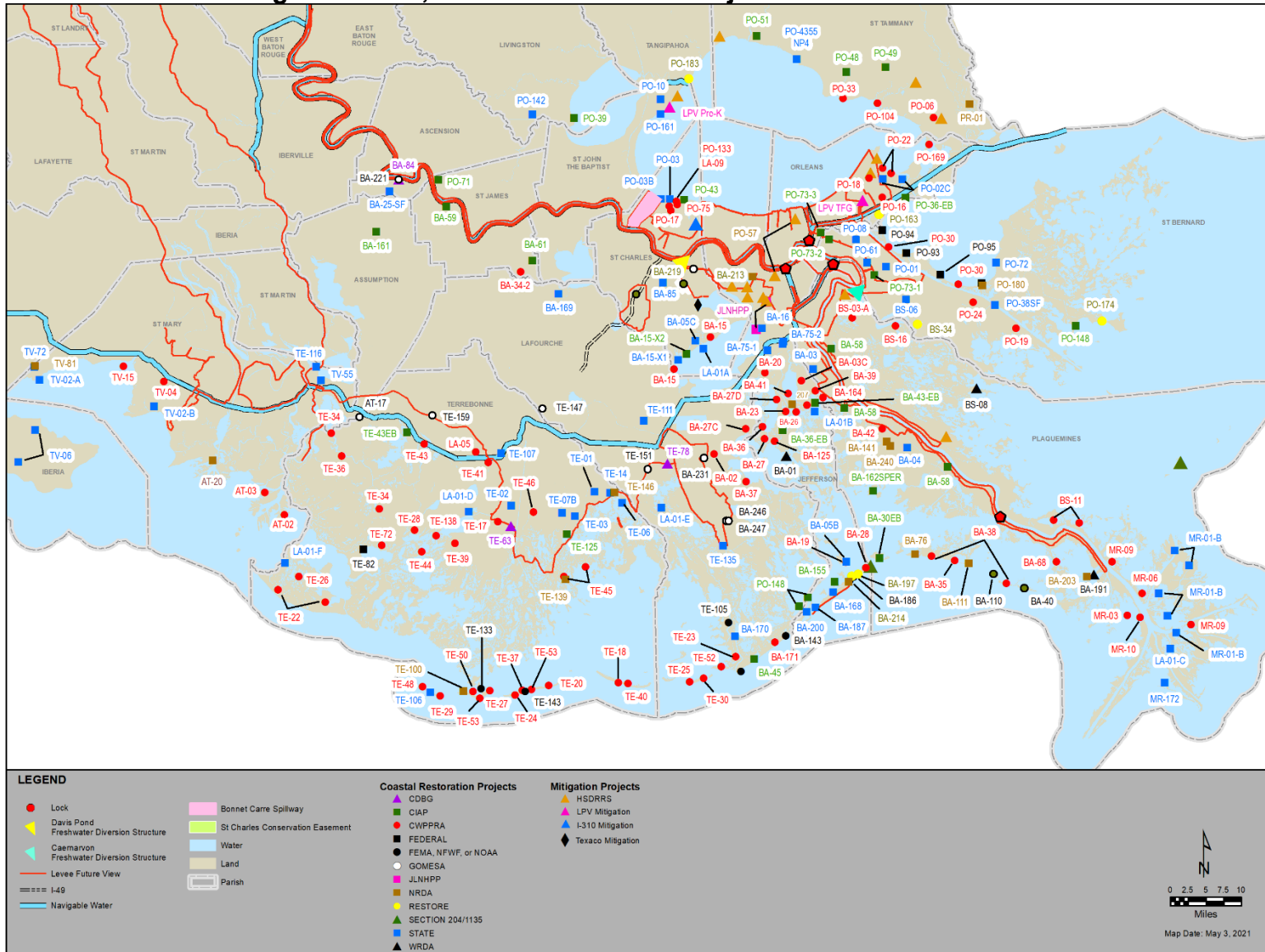


Figure 7. Proposed Pine Island Mitigation Site (Swamp restoration)

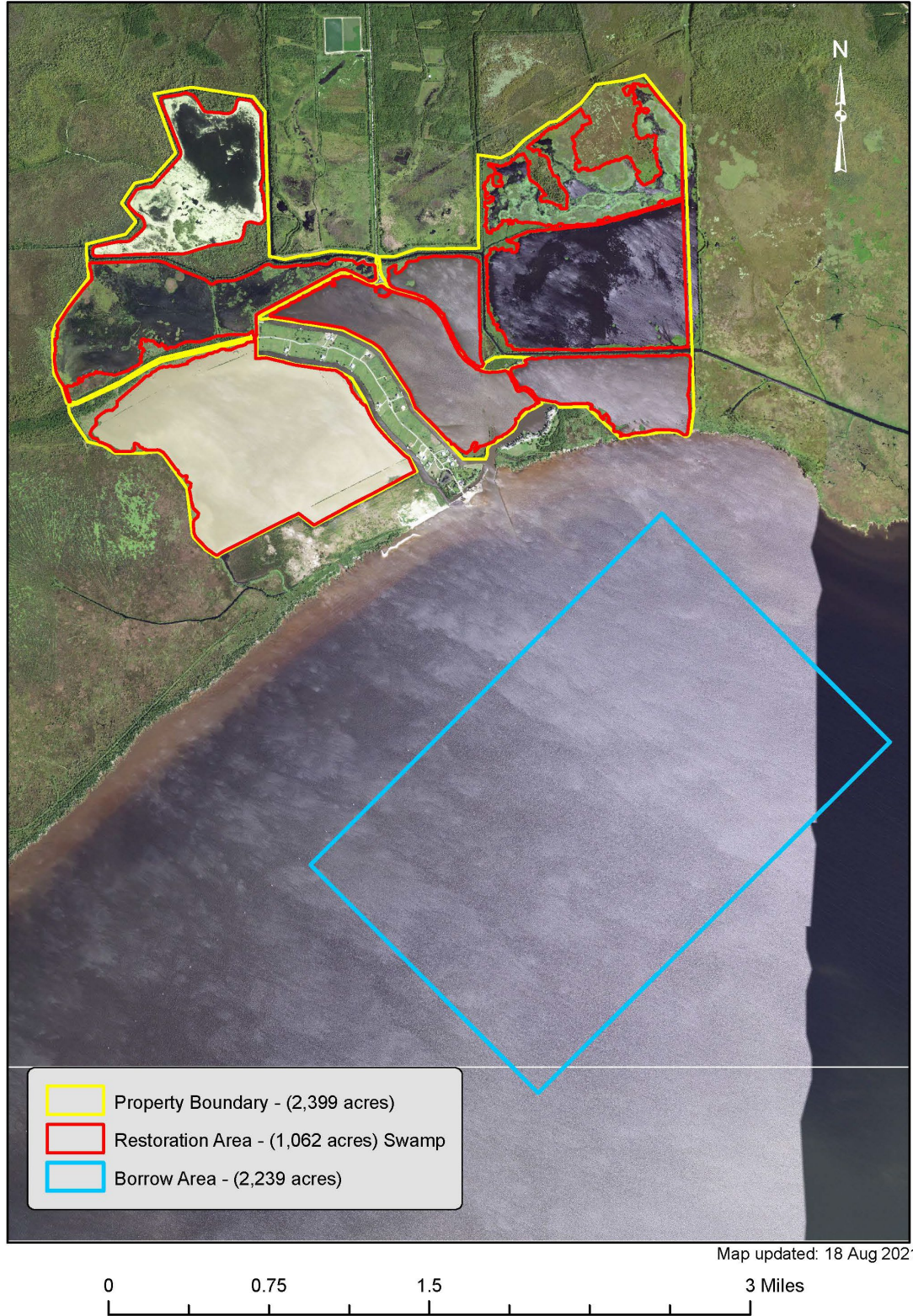


Figure 8. Proposed St. James Mitigation Site (Swamp restoration)

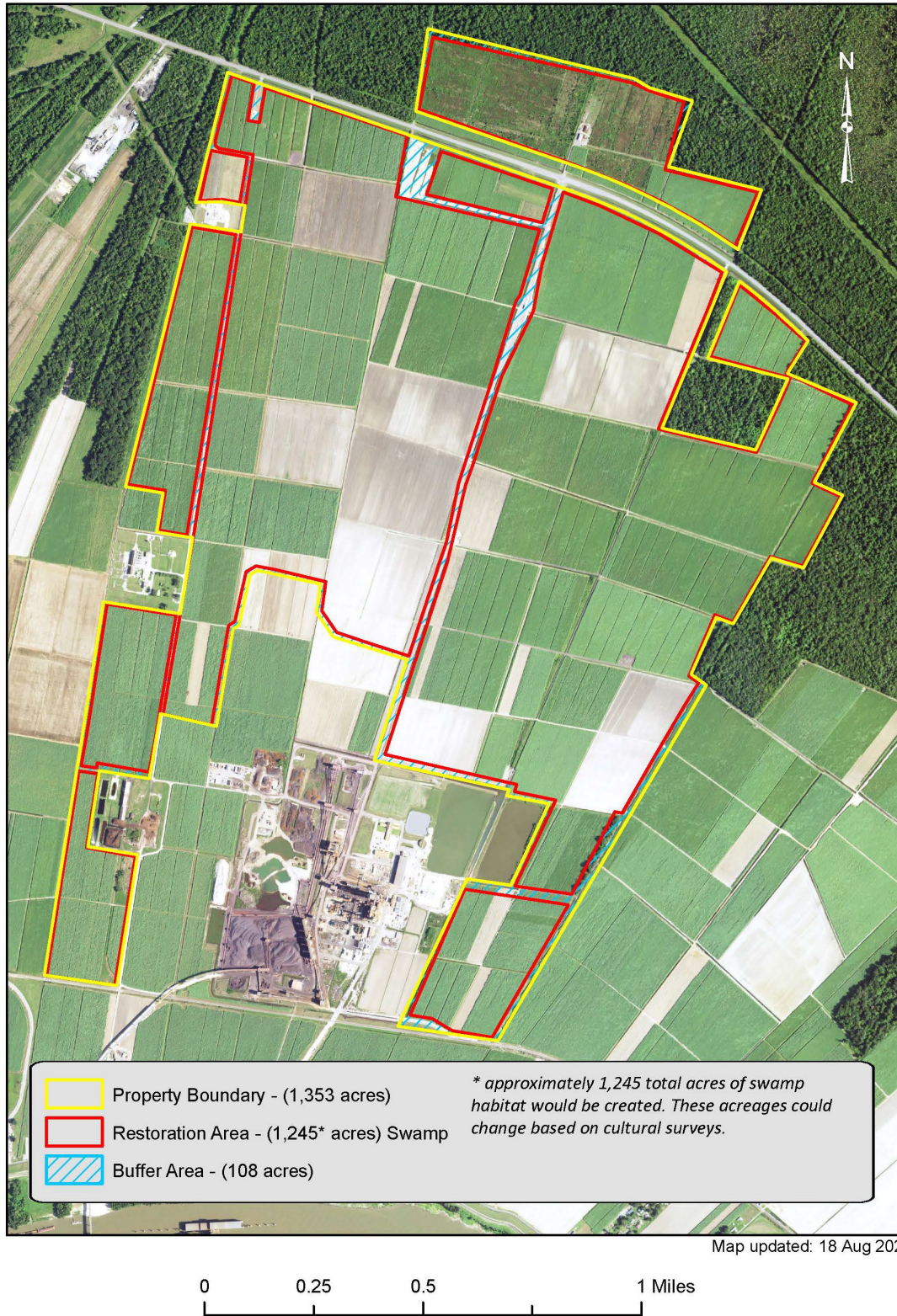
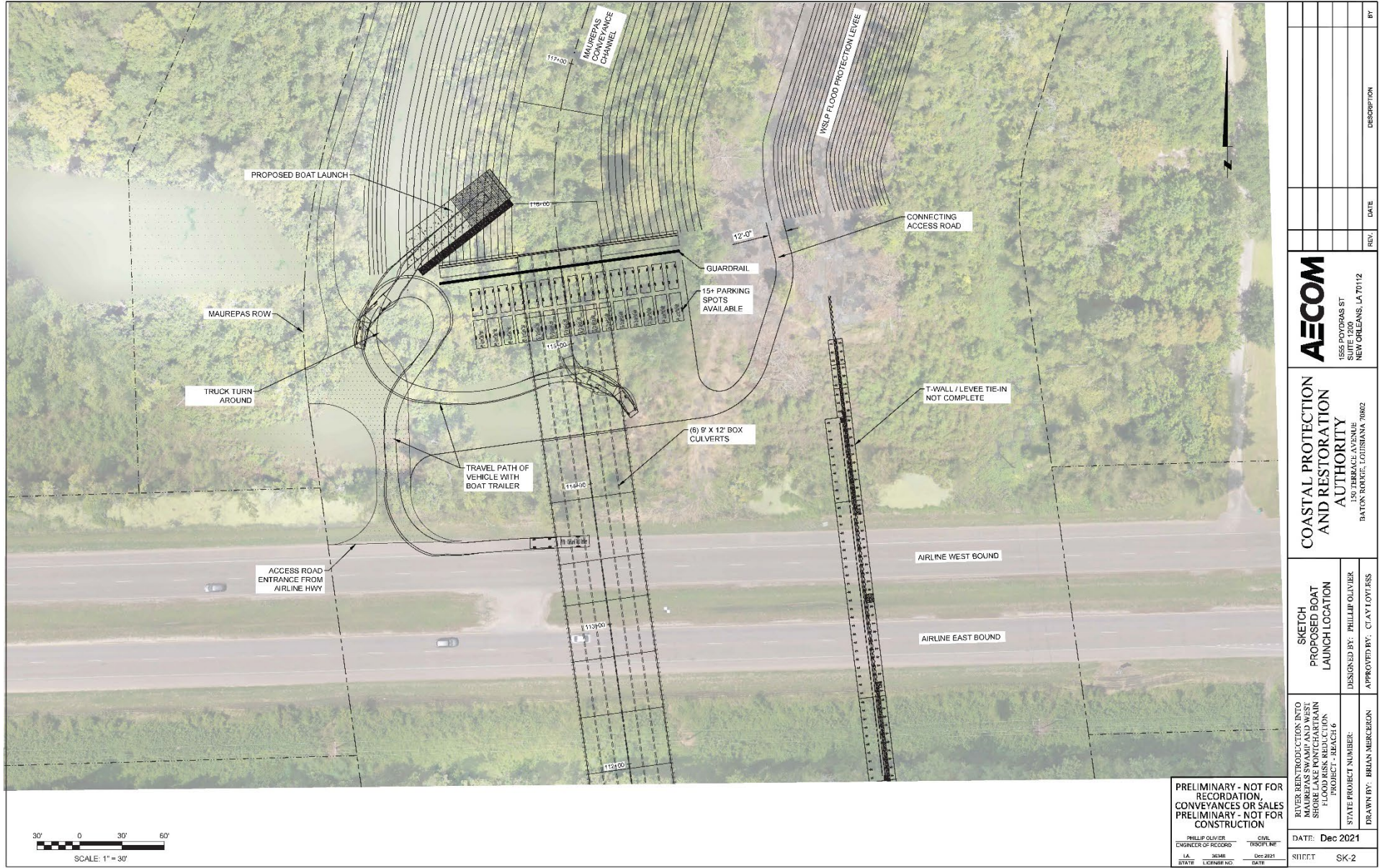


Figure 9. Proposed Boat Launch Relocation



PRELIMINARY - NOT FOR RECORDATION, CONVEYANCES OR SALES
 PRELIMINARY - NOT FOR CONSTRUCTION

PHILLIP OLIVIER
 CIVIL ENGINEER OF RECORD
 L.A. STATE LICENSE NO. 36346 DATE Dec 2021

RIVER REPRODUCTION INTO MAUREPAS SWAMP AND WEST SHORE LAKE PONTCHARTRAIN FLOOD RISK REDUCTION PROJECT - PHASE 6
 STATE PROJECT NUMBER:
 DRAWN BY: BRIAN MERCERON
 DESIGNED BY: PHILLIP OLIVIER
 APPROVED BY: CLAY LOTT/ESS

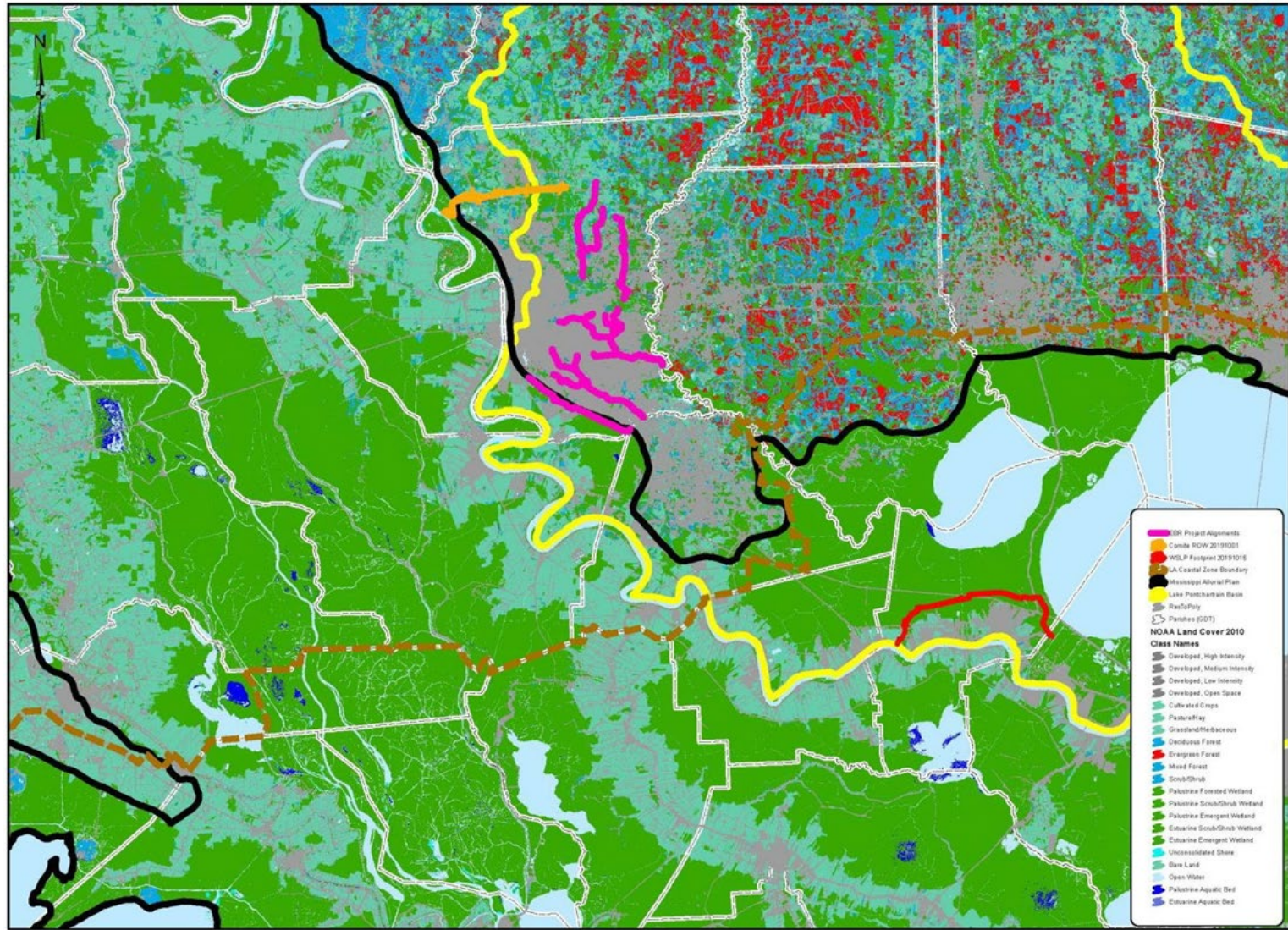
DATE: Dec 2021
 SHEET SK-2

COASTAL PROTECTION AND RESTORATION AUTHORITY
 150 TERRACE AVENUE
 BATON ROUGE, LOUISIANA 70802

AECOM
 1555 PONDCHARS ST
 SUITE 1200
 NEW ORLEANS, LA 70112

REV.	DATE	DESCRIPTION	BY

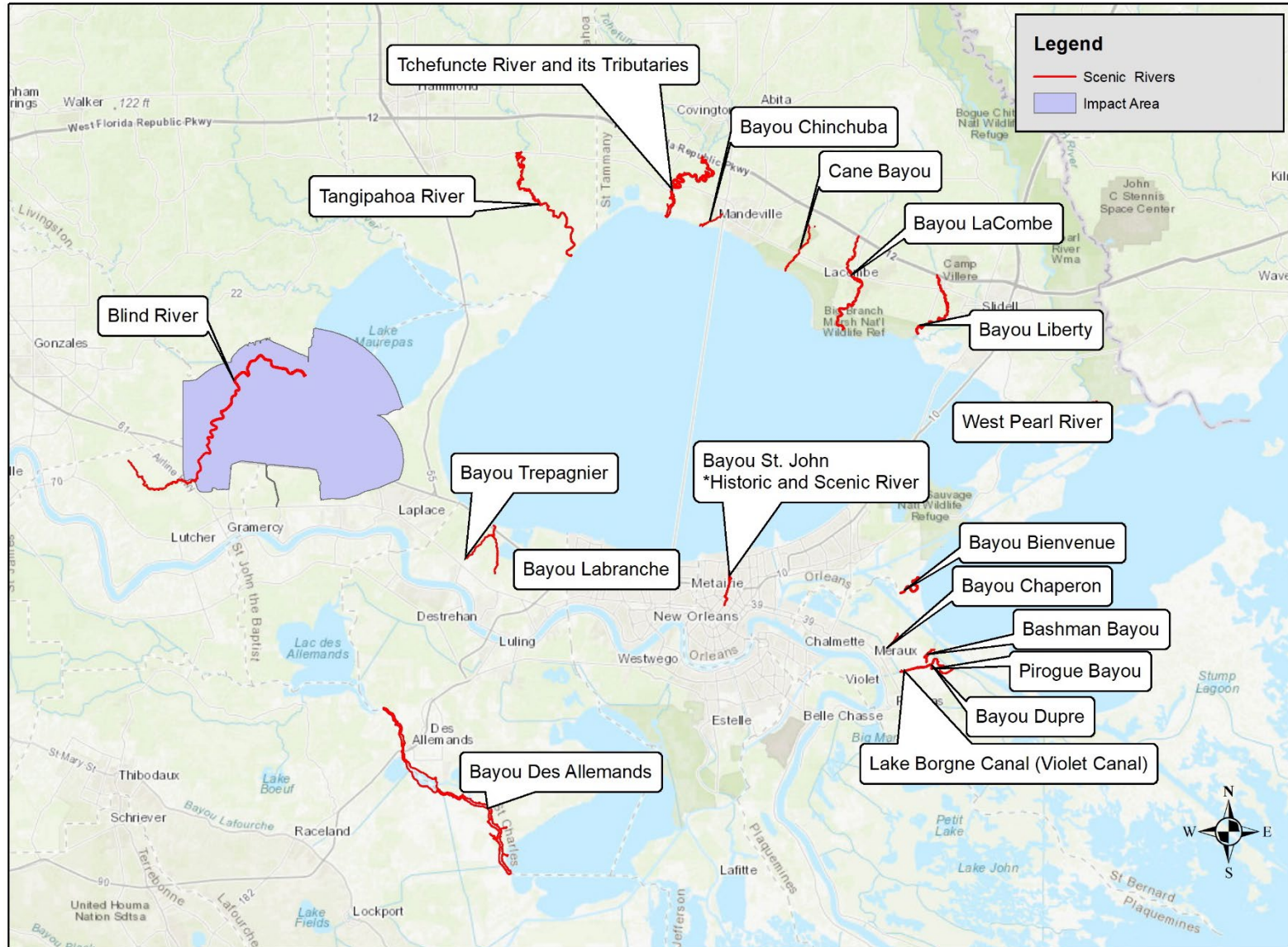
Figure 10. Habitats found in the planning area



Map Created: 22 Jan 2020

0 12.5 25 50 Miles

Figure 11. Scenic rivers found in the planning area



Service Layer Credits: Sources: Esri, HERE, Garmin, Intermap, increment P Corp., GEBCO, USGS, FAO, NPS, NRCAN, GeoBase, IGN, Kadaster NL, Ordnance Survey, Esri Japan, METI, Esri China (Hong Kong), (c) OpenStreetMap contributors, and the GIS User Community